



FRESNO



SERIES 3800 TYPE R FLAP VALVE

TECHNICAL DATA SHEET

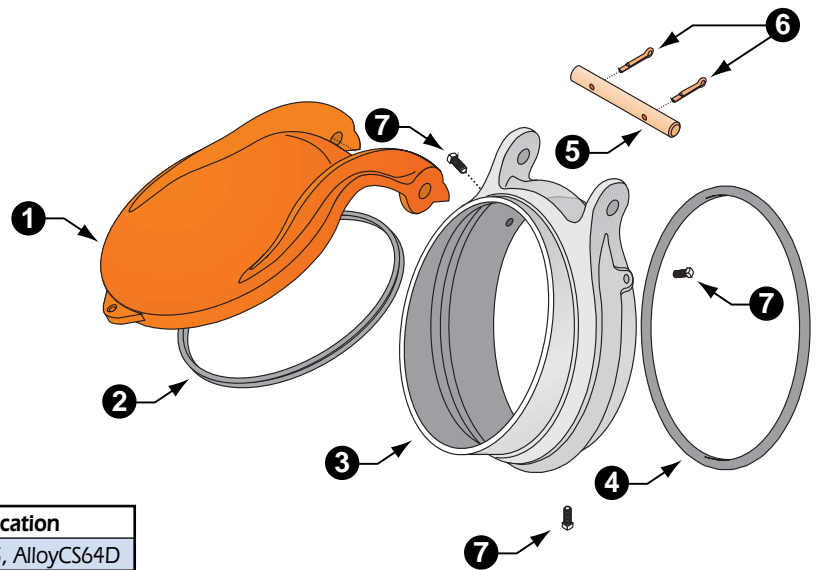


Model 38A

Series 3800 Type R Flap Valve

Features

- Self-aligning resilient seat cover design for reliable performance.
- Flow responsive Cast Aluminum cover is standard.
- Brass hinge pin provides corrosion resistance and smooth operation.
- Slip-on mounting with O-ring seal for easy installation.
- Heavy-duty Cast Iron seat.



Material Specifications

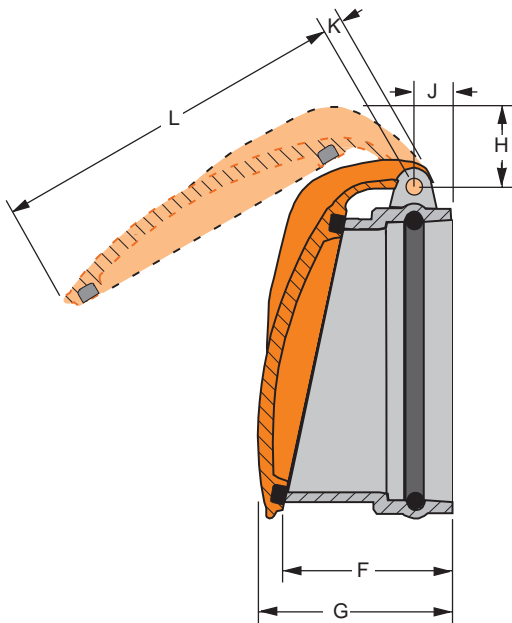
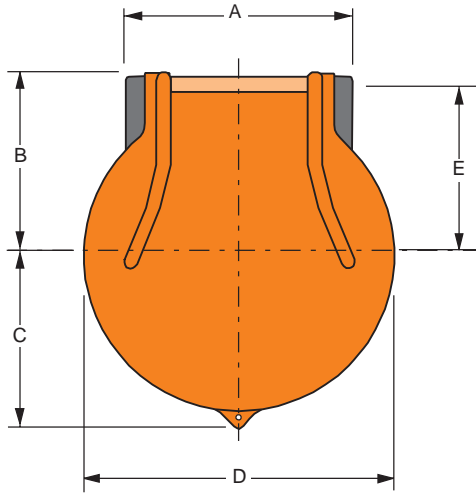
Item	Description	Material	Specification
1	Cover	Cast Aluminum	ASTM B26-65, AlloyCS64D
1A	Cover	Cast Iron	ASTM A126, Class B
2	Cover Gasket	SBR	ASTM D2000
3	Seat	Cast Iron	ASTM A126, Class B
4	O-Ring	SBR	ASTM D2000
5	Hinge Pin	Brass	ASTM B16
6	Cotter Pin	Brass	ASTM B16
7	Set Screw	Steel Plated	ASTM A307, A164

Applications

The Series 3800 Type R Flap Valve is designed for use on the discharge end of pipes to prevent the backflow or intrusion of water into the pipe. Typical applications include discharges to reservoirs, ponding basins and standpipes.

SPECIFICATIONS

SERIES 3800 TYPE R FLAP VALVE



Installation

Series 3800 Flap Valves are designed to be mounted on the end of a pipe. The valve seat slips over the pipe and an O-ring assures a watertight joint. Set screws are then tightened to hold the valve securely in place. This valve may also be ordered with a tapered setting collar for concrete pipe installations. The setting collar provides a tapered spigot which fits the inside diameter of the concrete pipe and holds the mortar joint.

Options

- Cast Aluminum or Cast Iron cover.
- Tapered setting collar for concrete pipe installation. (model 38C)
- Nominal (model 38A) and O.D. (model 38B) pipe applications.

Models Available

Model No.	Description
38A	Nominal, (IPS) pipe size
38B	O.D. pipe size
38C	Concrete pipe

Dimensional Information

Valve Size (Inches)	Model/Weight (lbs)			Dimensions (Inches)										
	38A	38B	38C	A	B	C	D	E	F	G	H	J	K	L
5	11.0	-	11.0	6.19	4.35	4.75	7.31	4.50	2.75	4.62	1.50	1.12	0.62	8.62
6	9.5	14	10	6.19	5.12	4.75	7.31	4.50	3.75	4.62	1.50	1.12	0.62	8.62
8	14.0	20.0	14.5	7.31	5.65	5.65	9.25	4.50	4.25	5.38	2.40	1.25	0.75	10.55
10	19.0	25.0	19.5	8.25	7.25	6.32	11.50	7.00	4.75	6.00	2.60	1.31	0.75	12.75
12	27.5	38.0	28.0	10.5	7.95	8.50	14.00	8.12	5.40	6.50	2.80	1.88	0.88	15.50
14	-	35.0	-	12.74	8.62	8.62	14.65	8.56	6.05	6.80	3.90	1.50	1.00	16.75

*Weights shown are with Aluminum cover



Fresno Valves & Castings, Inc.

7736 East Springfield Avenue
P.O. Box 40, Selma, CA 93662, U.S.A.

(800) 333-1658

www.fresnovalves.com